

## WARRANTY INFORMATION

Emerald Alarms Pty Ltd warrants this heat alarm to the original purchaser.

Emerald Alarms Pty Ltd warrants this water alarm is free from defects in material and workmanship under normal use and service for a period of 10 years from the date of purchase.

This warranty does not cover damage resulting from accident, misuse or abuse or lack of reasonable care of the product.

In no case shall Emerald Alarms Pty Ltd be liable for any incidental or consequential damages for breach of this or any other warranty express or implied whatsoever. Faulty product can be mailed to the following address with a detailed explanation of problem.

**Emerald Alarms Pty Ltd**

ABN 50 632 601 453

[www.emeraldalarms.com.au](http://www.emeraldalarms.com.au)

2023.08

## WATER ALARM USER MANUAL

### MODEL NUMBER: EP-WA-RF

Thank you for choosing Emerald Alarms.

This leaflet contains important information on the correct installation and operation of your water alarm.

Please read all the information before commencing installation and retain for future reference.

This unit has been designed to meet the latest standards and complies with EN IEC 55014-1, EN IEC 55014-2, EN 300 220-1, EN 300 220-2, EN 301 489-1, EN 301 489-3, EN 62479



<b>DIMENSIONS</b>	Φ75 x 18mm
<b>WEIGHT</b>	48.4g
<b>WARRANTY</b>	10 years
<b>POWER - BATTERY</b>	3 year replaceable 3V lithium battery (DC3V CR2×1)
<b>INTERCONNECT</b>	Built-in wireless radio frequency (RF) technology Connects with up to 40 Emerald RF enabled alarms
<b>WIRELESS DISTANCE</b>	>20m (100m outside)
<b>SOUND PATTERN</b>	ISO 8201
<b>ALARM VOLUME</b>	>85dB(A) @ 1m
<b>WATERPROOF PROTECTION LEVEL:</b>	IP65
<b>NORMAL OPERATING &amp; STORAGE TEMPERATURE</b>	0°C to 50°C
<b>NORMAL OPERATING &amp; STORAGE HUMIDITY</b>	≤95% relative humidity (non-condensing)
<b>PACK INCLUDES</b>	Alarm and instruction manual

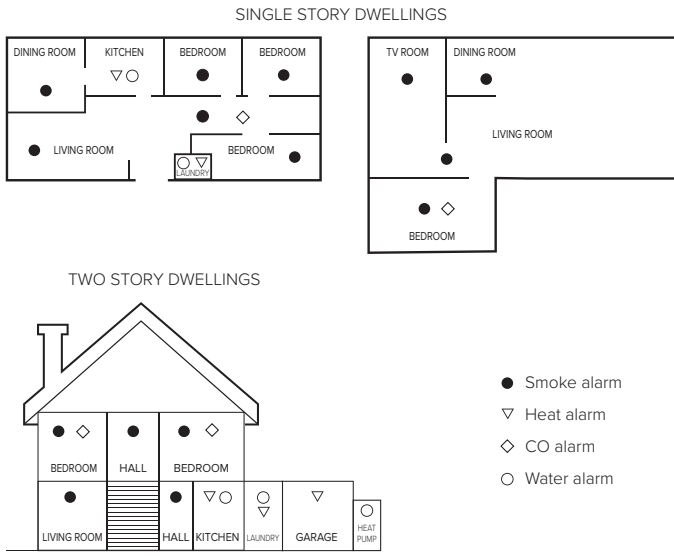
## DESCRIPTION

An innovative integrated design, this alarm accommodates a water immersion sensor, buzzer, wireless module, battery, and various other components. These elements are seamlessly integrated into a compact device. Despite its small size, it possesses remarkable capabilities, including highly sensitive detection, stable performance, and prolonged usage. With its user-friendly interface, as well as its low power consumption, this alarm ensures both your peace of mind and the maintenance of dry environments.

## OPTIMAL PLACEMENT OF ALARMS

For the highest level of protection, we strongly recommend installing multiple combination alarms in your home. Each alarm serves a specific purpose and adheres to certain rules and regulations. To ensure proper installation, we advise following the state-based regulations and installation requirements.

The following graphs illustrate some best practices for alarm placement:



**Note:** These graphs are for illustrative purposes only and may not cover all potential scenarios. It is essential to assess your home's layout and potential risks to determine the most effective alarm placement.

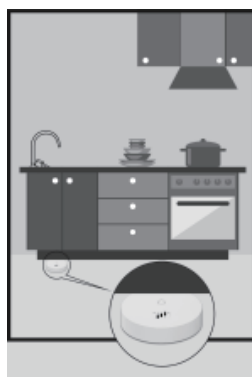
## WATER ALARM PLACEMENT

The water alarm is perfect for safeguarding environments prone to water-related risks – such as laundry room, kitchen, and swimming pool. Its ultra-thin profile enables placement in tight spaces, such as under washing machines or cabinets. No drilling is required.

With an IP65 protection rating, the water alarm can handle all sorts of conditions like humidity and dust.



FLOOR UNDER THE WASHING MACHINE



FLOOR UNDER KITCHEN CABINETS

**Important:** Avoid placing the device on conductive surfaces like metal. This will lead to an unintended short connection between sensors, potentially causing false alarms.

## HORIZONTAL POSITIONING:

To ensure timely detection of water leakage, it is crucial to place the water alarm in a horizontal orientation. Incorrect positioning might hinder its ability to effectively detect leaks.

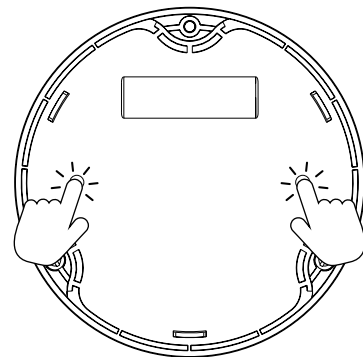
## MULTIPLE LEAK SOURCES:

In scenarios where there are multiple potential sources of leakage, it is recommended to deploy multiple alarms. This ensures comprehensive coverage and swift detection.

## CONFIGURATION WITH 'SHORT CONNECT'

The water alarm offers a seamless configuration process, eliminating the need for any buttons. Instead, you'll use the two sensors, conveniently located on the back cover. There are several user-friendly methods to achieve a Short Connect in setting up your water alarm:

### METHOD 1: TOUCH SENSOR



To initiate this method, simultaneously touch the two sensors on the back cover. For optimal results, it is recommended to lightly moisten your fingers before using this technique.

### METHOD 2: WET TOWEL

This method involves placing the water alarm on a damp towel. The sensors will detect the moisture and initiate the Short Connect.

### METHOD 3: SCREWDRIVER

For an alternative approach, you can employ a screwdriver to connect the two sensors. This method is particularly useful when the other options might not be feasible.

## ACTIVATION

Short connect the sensors and hold for 5 seconds until the green LED lights up twice, release the sensors within 2 seconds. You'll hear two 'beep' sounds, confirming activation.

## OPERATION AND TESTING

In the event of water leakage detection, the alarm will promptly activate, accompanied by a flashing LED light. This alarm mode will continue until the sensors no longer come into contact with water.

### TESTING YOUR WATER ALARM

It is recommended that you test your water alarm once a month to ensure proper operation. Simply test with short connect function and hold. This action will trigger the alarm to sound, indicating that the electronic circuitry, alarm, and battery are in good working condition. If no alarm sounds, it could mean that the unit has defective batteries or other failures.

### LOW BATTERY POWER

If the battery power is low, the unit will emit an audible chirp twice every one minute, accompanied by two flashes of the LED.

To replace the battery, unscrew the top cover of the alarm, swap out the old battery with a new one, and reinstall the battery cover securely.

## WIRELESS INTERCONNECTING FUNCTION

Easily connect your Emerald water alarm to other Emerald RF integrated alarms using the built-in wireless module.

For the best results we advise you first choose a central alarm and then connect other alarms to your central alarm.

### SETTING UP WIRELESS CONNECTION:

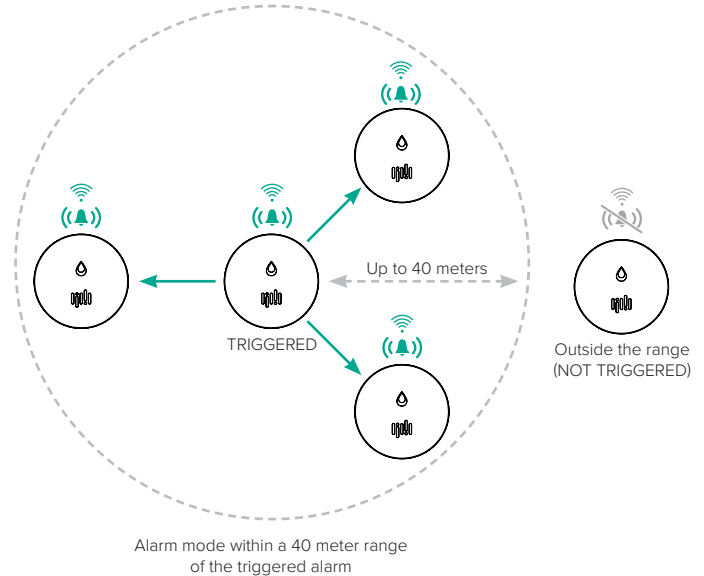
1. Ensure all the alarms are activated.
2. Choose one alarm to be the central connection point for others.
3. On the central alarm, short connect sensors three times within two seconds. The red LED will flash quickly, indicating it's in 'pairing mode' for 90 seconds. To exit the pairing mode, short connect sensors once.
4. While the central alarm is in pairing mode, short connect the sensors three times within two seconds on the other alarms. They will interface with the central alarm. Pairing is successful when you hear a beep and see one light flash.
5. Repeat steps 3 and 4 for other alarms.

### DEACTIVATING WIRELESS CONNECTION:

1. Short connect the sensors on any alarm three times within 4 seconds. The red LED will flash quickly.
2. Short connect and hold the sensors again until the red LED goes out (first time) and then release the sensors immediately. The red LED will flash slowly.
3. Short connect the sensors again, and the alarm will beep 3 times, confirming the wireless connection has been successfully cleared.

### Important:

1. Alarms must be activated for wireless connectivity.
2. One alarm can connect to a maximum of 40 other Emerald RF enabled alarms wirelessly.
3. Our alarms cannot communicate with other manufacturers' alarms.
4. In a network of interconnected alarms within a 40-meter range, any detected emergency triggers all connected alarms simultaneously. The alarm needs to be wirelessly connected for all connected alarms to trigger.



## ALARM MEMORY FUNCTION

The water alarm will remember if it has been triggered for a period of 48 hours. The red LED indicator flashes 3 times every 48 seconds during that period.

## HOW TO DEACTIVATE THE WATER ALARM SENSORS

Short connect the sensors six times within four seconds, the alarm will chirp once, indicating the product has been deactivated. There will be no alarm functions while in this status. You must reactivate the alarm before use.

## ROUTINE MAINTENANCE

1. In addition to monthly testing, the alarm requires regular cleaning to remove dust, dirt or debris.
2. Use a paper towel to wipe away any water stains from the device's bottom surface to ensure the precise functioning of your water immersion alarm and prevent any unintended alarms.